



SAMUEL WOOD

Richmond Cottage Brimfield, Ludlow, Shropshire, SY8 4NE

Price Guide £220,000



This spacious 2 bedroom end terraced cottage is located right in the heart of this popular and well serviced village just into North Herefordshire. The property enjoys driveway parking for 2 cars and an enclosed rear garden. Accommodation benefitting from oil fired heating and upvc double glazing briefly includes: Large Reception Hall, Living Room with woodburner, Kitchen / Dining Room with vaulted ceiling, Bathroom, First Floor Landing and 2 Bedrooms. No onward chain EPC E

- 2 bedroom end terraced cottage
- Central village location
- Rooms of spacious proportions
- Oil fired heating and upvc double glazing
- Parking for 2 cars
- Enclosed rear garden

Brimfield is a popular and well serviced North Herefordshire village with facilities that include: Public House with shop, Church, Village Hall, Brimfield and Little Hereford sports club, whilst a short distance away at Woofferton there is a garage with a Sainsbury's to Go, Greggs Bakers, Starbucks and a further Public House.

Canopied Porch

underneath which is an upper glazed front door opening into

Spacious Reception Hallway

with quarry tiled floor

Living Room 15'5" x 14'6" (4.70m x 4.44m)

with 2 windows to frontage and a feature fireplace with heavy beam over, exposed brick features, tiled hearth and a Villager multi-fuel stove fitted

Kitchen / Dining Room 21'1" x 11'1" (6.44m x 3.64m)

sits at the rear of the house and has a high vaulted ceiling with exposed truss and exposed brickwork. Window to rear, window to side, 2 large double glazed roof windows, quarry tiled floor and ample room for table and chairs. The kitchen is fitted with a range of base cupboards, wall cupboards and drawers, part woodblock work surfaces, Neff electric hob with extractor positioned above, double oven adjacent. Planned space and plumbing for washing machine, room for a fridge and freezer.

Boiler Cupboard

housing the Worcester Greenstar oil fired boiler which heats domestic hot water and radiators and shelving

Bathroom 8'7" x 5'6" (2.64m x 1.70m)

with window to rear elevation, tiled floor and a suite in white of wc, pedestal wash hand basin and panelled bath with shower attachment

First Floor Landing

with exposed timbers and Juliette balcony overlooking the Kitchen.

Bedroom 1 14'6" x 12'6" (4.44m x 3.83m)

with 2 windows to frontage, exposed beam and access to roof space

Bedroom 2 15'7" x 9'0" (4.77m x 2.76m)

with exposed timbered features and window to frontage

Outside:

The property is approached onto a tarmac driveway which provides parking for 2 cars together with large log stores. The rear garden with the property directly nearest the house has a tarmac finish with a covered area and gated access around the terrace. A walkway then passes the oil tank and 2 garden sheds and opens into the garden area which has a gravelled finish with stone edged borders, further steps up to a decked area, 2 greenhouses and a large Summer House with light, power and internet connection fitted. A selection of plant pots will remain with the property.

Services:

Mains electricity, mains water, mains drainage, oil fired heating to radiators, windows are upvc double glazed, telephone to BT regulations

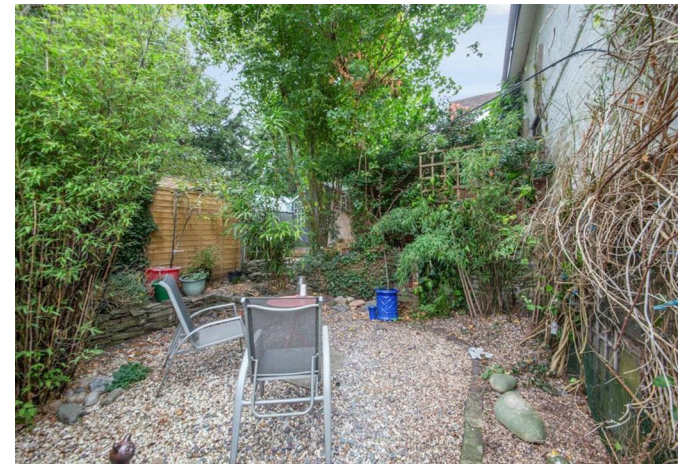
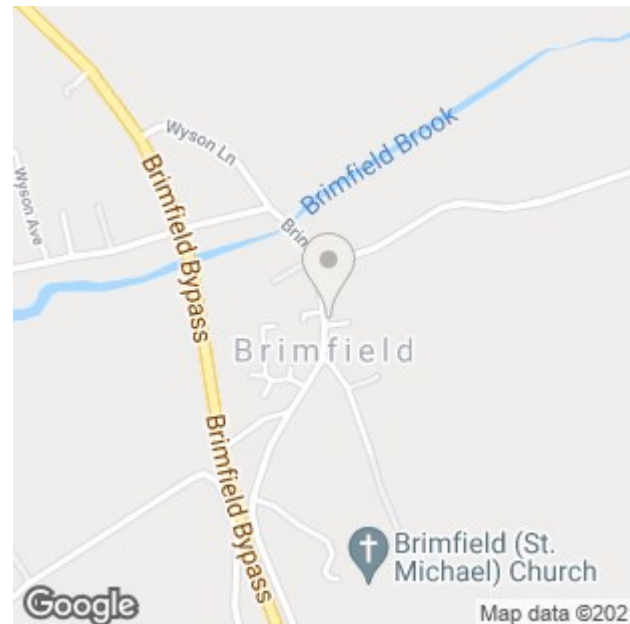
Viewings

Contact the Ludlow Office on Tel: 01584 875207 or Craven Arms Office 01588 672728

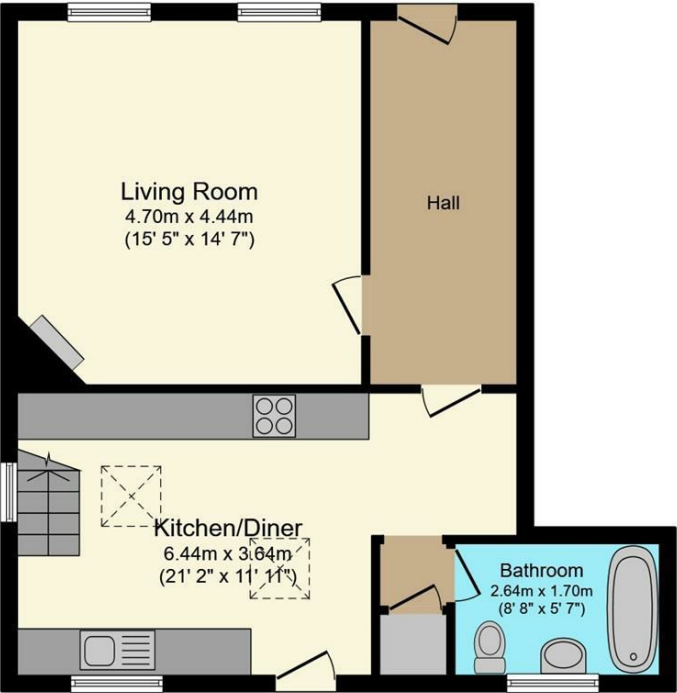
Or you can email us at ludlow@samuelwood.co.uk or visit our web site at www.samuelwood.co.uk

For out of office enquires please phone Andrew Cadwallader on 07974 015764

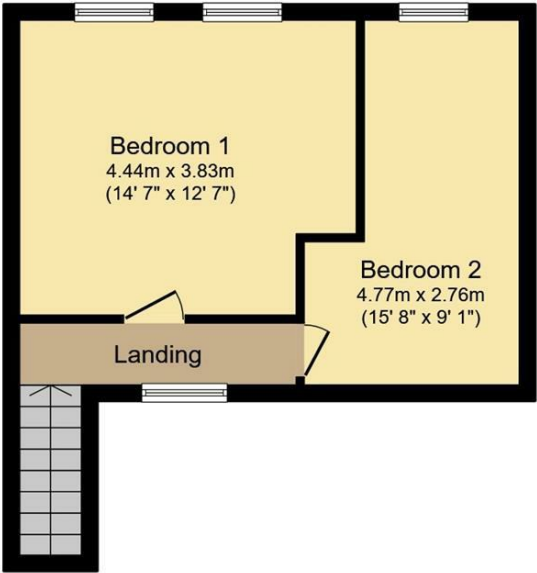
Samuel Wood routinely refers vendors and purchasers to providers of conveyancing and financial services. We may receive fees from them as declared in our Referral Fees Disclosure Form.



Floor Plans



Ground Floor



First Floor

or Plan is for illustration purposes only and may not be representative of the property. The position and size of doors, windows or features are approximate. Unauthorized reproduction prohibited. © PropertyBOX

We take every care in preparing our sales details. They are checked and usually verified by the Vendor. We do not guarantee appliances, alarms, electrical fittings, plumbing, showers etc. You must satisfy yourself that they operate correctly. Room sizes are approximate; they are usually taken in metric and converted to imperial. Do not use them to buy carpets or furniture. We cannot verify the tenure, as we do not have access to the legal title; we cannot guarantee boundaries or rights of way so you must take the advice of your legal representative. No person in the employment of or representing Samuel Wood has any authority to make any representation or warranty whatever in relation to this property. If there is any point which is of particular importance to you, please contact the office and we will be pleased to check the information. Do so particularly if contemplating travelling some distance to view. Applicants are advised that the majority of our shots are taken with a wide angle lens.